



CONTENTS

PAGE 1 PRINCIPAL'S WELCOME

PAGE 2 SIXTH FORM VISION

PAGE 3 THE SIXTH FORM TEAM

PAGE 4 STUDENT SUPPORT

PAGE 6 STUDENT DESTINATIONS

PAGE 8 STUDENT SUCCESS STORIES

PAGE 9 OUR PATHWAYS

PAGE 23 A LEVEL OR APPLIED SUBJECTS?

PAGE 24 A LEVEL COURSES

PAGE 25 APPLIED COURSES

PAGE 26 WHY CHOOSE GATEACRE?

PAGE 27 HIGH ACHIEVERS PROGRAMME

PAGE 28 EPQ

PAGE 29 HOW TO APPLY

PRINCIPAL'S WELCOME

Dear Prospective Students,

Welcome to our sixth form! It is my pleasure to extend a warm greeting to each of you as you embark on this exciting new chapter in your academic journey.

At our school, we are committed to fostering an environment where you can thrive both academically and personally. The sixth form experience is not just about preparing for exams; it's about developing critical thinking, honing your skills, and discovering your passions. Here, you will have access to a wide range of subjects, dedicated teachers, and numerous opportunities to engage in extracurricular activities that will enrich your education.

We believe that every student has unique talents and aspirations, and it is our goal to support you in achieving your dreams. Whether you are aiming for university, vocational training, or entering the workforce, we are here to guide and encourage you every step of the way.

I invite you to take advantage of the resources available to you, engage with your peers, and immerse yourself in our vibrant school community. Your time in sixth form will be transformative, and I am excited to see how you will contribute to our school and beyond.

Once again, welcome! I look forward to meeting you and witnessing the remarkable things you will accomplish in the coming years.

Mr N. Jamil
Principal, Gateacre School



SIXTH FORM VISION

Our Sixth Form vision is to create an inspiring, supportive, and ambitious learning environment where every student is encouraged to strive for excellence and reach their fullest potential.

We are committed to helping students set and achieve high aspirations, whether that be gaining entry to top universities, securing competitive apprenticeships, or launching successful careers. Through personalised academic support, career guidance, and a focus on personal development, we empower our students to take ownership of their futures and leave us with a clear and ambitious destination that aligns with their passions and goals. At Gateacre Sixth Form, success is not just about academic achievement—it's about developing the skills, confidence, and mindset to thrive in whatever challenges lie ahead.



THE SIXTH FORM TEAM



Miss Parsons - Head of Sixth Form

Miss Parsons has extensive experience as Head of Sixth Form, with a strong track record of leading teams that ensure the students under her guidance gain access to Russell Group universities, including Oxbridge, as well as employment and apprenticeship opportunities with globally renowned employers.



Mr Wildman - Deputy Head of Sixth Form

Mr Wildman has worked at Gateacre School since 2006 and has led on our Social Science Pathway - in this time he has delivered excellent results and destinations, along with providing a constant source of support for our students. Mr Wildman's works specifically with our Year 12 and 13 students to maximise their academic performance.



Miss Thomas - Assistant Head of Sixth Form

Miss Thomas is our long standing and dedicated Assistant Head of Sixth form. She has a wealth of experience in supporting students secure their destinations after Sixth Form and is an excellent resource for students when they are completing their UCAS applications. She is also our dedicated professional mentor for our prestigious University of Liverpool Scholars programme and EPQ qualification. Miss Thomas is always on hand to support students and provides advice on all things Sixth Form.

STUDENT SUPPORT

COUNSELLING SERVICE

Our Counselling Service offers a warm, confidential, and non-judgemental environment for you to talk and truly be heard. We will empower you to develop the skills and the confidence you need to get back on-track



FINANCIAL SUPPORT

There shouldn't be any barriers to you succeeding as a student. Support is available if you need help to cover education-related costs, such as study resources or travelling to College, and can include:

- £1,200 Bursary for vulnerable students
- 16-19 Discretionary Bursary
- Free school meals



DEVELOPMENT COACHING - UNIVERSITY AND CAREERS ADVICE

Our careers and HE advisors will provide advice to help you decide your best route into work or university. You will have the opportunity to attend local university and employability fairs, as well as attend open days and engage with many industry experts for careers advice and guidance.



ACADEMIC TUTORING

Students will have access to an online tutoring platform for selected qualifications to support their independent study.



EMPLOYABILITY SKILLS AND WORK EXPERIENCE

Employability skills are reinforced in lessons and developed through many events throughout your two years studying. Students will have a dedicated work experience week which is relevant towards your career aspirations.



STUDY SUPPORT

Studying for A Levels and university degrees requires motivation and the development of independent research and study skills. We run study support sessions where students will receive guidance on study skills and independence. We also offer many quiet study spaces for students to utilise throughout the day.

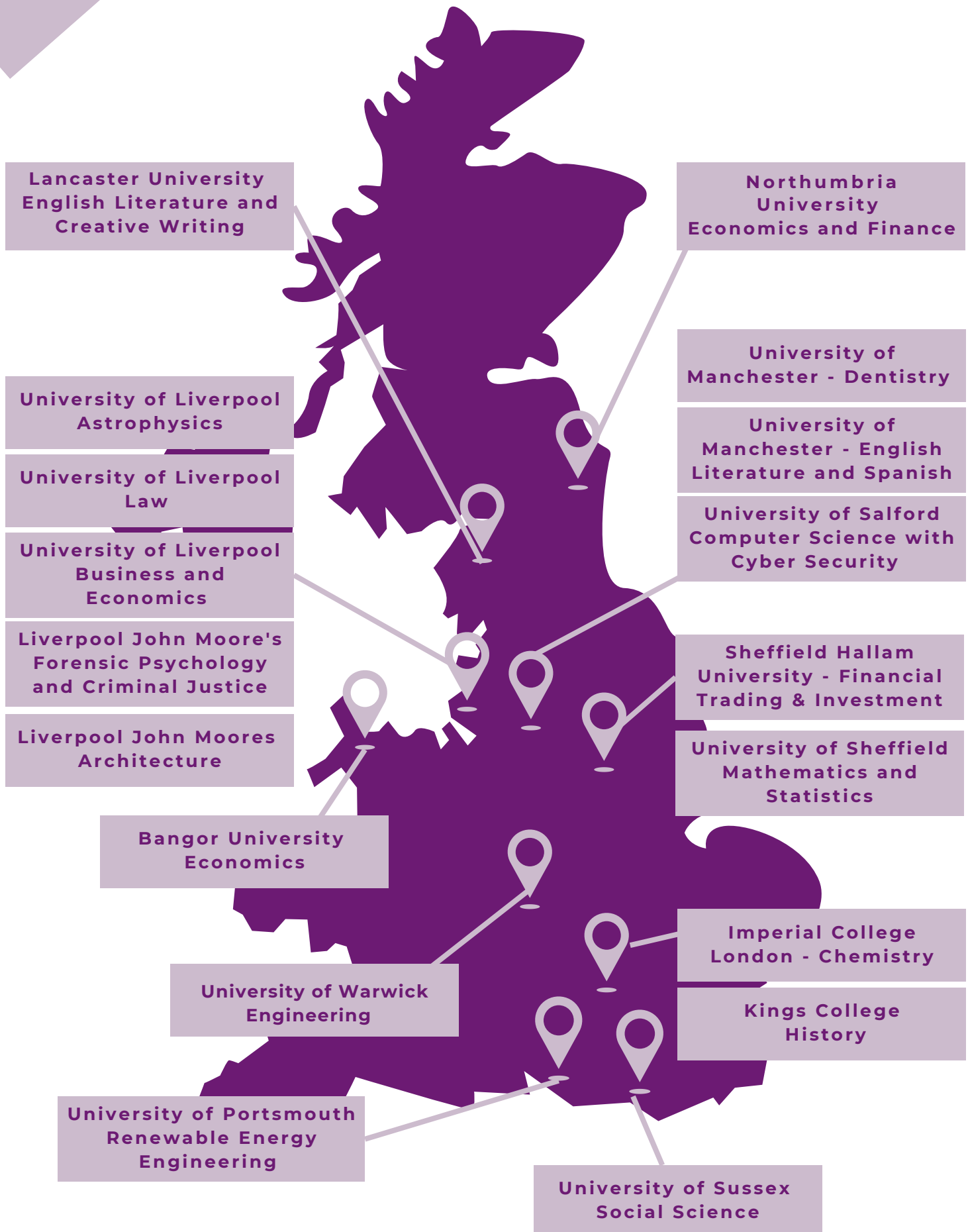


STUDENT DESTINATIONS

We pride ourselves on the quality of guidance and support students are given when identifying the right route for them after studying at Gateacre Sixth Form. Whether that be university, apprenticeships or employment. Because of this our students progress to a broad range of universities and courses.



WHAT COURSES HAVE OUR STUDENTS GONE ON TO STUDY?



STUDENT SUCCESS STORIES

ELEANOR

Dist* - COMPUTING
C - HISTORY
C - SOCIOLOGY

LIVERPOOL HOPE
UNIVERSITY
LAW



RAULIS

A - BIOLOGY
A - CHEMISTRY
A - MATHEMATICS

IMPERIAL COLLEGE
LONDON
CHEMISTRY

AISTE

B - ENGLISH
LITERATURE
B - HISTORY
B - SOCIOLOGY

UNIVERSITY OF
LIVERPOOL
LAW



GEORGINA

B - ENGLISH
LITERATURE
B - HISTORY
B - PSYCHOLOGY

KINGS COLLEGE
LONDON
HISTORY

GABY

B - CRIMINOLOGY
C - PSYCHOLOGY
C - SOCIOLOGY

LIVERPOOL JOHN
MOORES
FORENSIC
PSYCHOLOGY



CAIT

B - CRIMINOLOGY
C - HISTORY
C - SOCIOLOGY

UNIVERSITY OF
LIVERPOOL
OCCUPATIONAL
THERAPY



OUR PATHWAYS

Our pathways have been strategically designed to facilitate students' progression towards high-quality destinations. We have thoroughly analysed and mapped potential progression routes into higher education, apprenticeships, and employment for each pathway. Additionally, we have carefully recommended relevant subject choices to support students' advancement into their respective industries. These pathways are structured to help students visualise the diverse opportunities that their academic interests can lead to, fostering a clear understanding of their future career trajectories.

**Future
Scientists**

Mathematics

Engineering

**Business &
Economics**

Computing

Creatives

**Music and
Sound**

Performing

**Health and
Social Care**

Social Science

**English and
Creative
Writing**

Sport Science

FUTURE SCIENTIST



Experiential Learning

Students on our science pathway will have access to the following experiences;

Sutton Trust Pathway to Engineering, University of Liverpool Nuclear Physics masterclass, STEM club, Chemistry Olympiad Competitions, Medics & Me, Nuffield Research Placement, Merseyside Young Analyst Competition, Spectroscopy in a Suitcase workshop

What can this pathway lead to?

University Courses/ Apprenticeships
Medicine, Microbiology, Pharmacology, Biomedical Science, Forensic Science, Conservation Biology, Marine Biology, Biochemistry, Pharmaceutical Science, Biomedical Engineering, Geophysics, Astronomy, Theoretical Physics, Astrophysics & Cosmology.

Careers

Doctor, Dentist, Veterinary Practitioner, Marine Biologist, Engineer, Statistician, Accountant, Data Scientist, Software Engineer, Financial Trader/Analyst, Research Scientist, Pharmacist, Forensic Scientist.

Our Science Pathway will support you to develop the skills and experiences you will need for applying to some of the most competitive courses such as Medicine, Dentistry, Veterinary Science and Engineering. You will develop skills in practical techniques and processes. You will be able to analyse and interpret data and broaden your understanding of the world around us. With our dedicated science laboratories and close affiliations with local and national universities you will gain more than just qualifications that will prepare you for a future as a professional scientist. This is an exhilarating pathway led by our specialist Biology, Chemistry and Physics teaching experts.



SUITABLE SUBJECTS

A Level
Biology

A Level
Chemistry

A Level
Physics

A Level
Maths

A Level
Computer Science

Applied
Science

MATHEMATICS

Our Mathematics Pathway develop your logical reasoning and problem-solving abilities, equipping you with the tools to tackle complex challenges in fields like engineering, finance, data science, and technology. The rigorous curriculum not only enhances your understanding of mathematical concepts but also encourages critical thinking and precision. Moreover, a strong foundation in mathematics is highly valued by universities and employers alike, making you a competitive candidate in today's data-driven world. By pursuing Mathematics and Further Mathematics, you're not just mastering numbers; you're preparing for a future filled with endless possibilities!

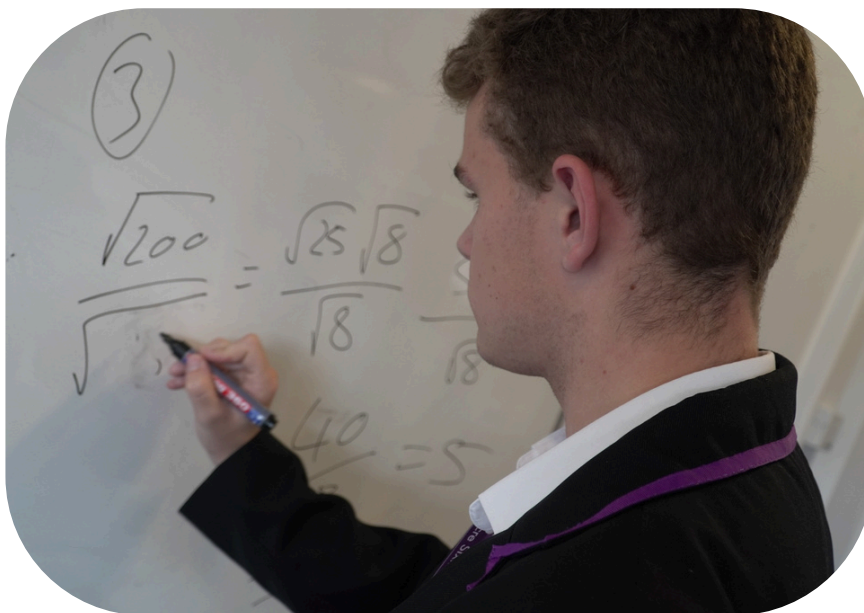
Experiential Learning

Liverpool University visits and lectures, Bletchley Park, Senior Maths Challenge, Liverpool University Problem solving days

What can I do after Gateacre Sixth Form?

University Courses/ Apprenticeships
Pure Mathematics, Applied Mathematics, Mathematics and Statistics, Financial Mathematics, Computer Science, Accounting, Cybersecurity, Economics, Engineering

Careers: Chartered Accountant, Stock Broker, Investment Analyst, Statistician, Data Scientist, Software Engineer, Financial Trader/Analyst, Research Scientist, Doctor, Engineer, Architect, Tax Advisor, Financial Risk Analyst



SUITABLE SUBJECTS

A Level
Maths

A Level Further
Maths

A Level
Computer Sci

A Level
Physics

BTEC
Engineering

A Level
Economics

ENGINEERING

Engineering provides an incredible opportunity to dive into the world of innovation and problem-solving, where creativity meets technical expertise. This dynamic pathway equips you with essential skills in mathematics, physics, and design, enabling you to understand and create solutions for real-world challenges. As you explore various engineering disciplines—such as mechanical, electrical, and civil—you'll engage in hands-on projects that stimulate your curiosity and foster critical thinking. The demand for skilled engineers continues to grow across industries, from renewable energy to aerospace, making this path not only intellectually rewarding but also a gateway to a wide array of exciting career opportunities.

Experiential Learning

Pathways to Engineering programme, University Visits, Jaguar 4x4 challenge, Aerobus Careers Day,

What can I progress to?

University Courses/Apprenticeships: Civil Engineering, Automotive Engineering, Electronic Engineering, Aerospace Engineering, Mechanical Engineering, Robotics & Embedded Systems Engineering, Biomedical Engineering, Chemical Engineering

Careers: Design Engineer, Electrical Engineer, Aerospace Engineer, CAD/CAM technician, Mechanical Engineer, Maintenance Engineer, Project Manager, Civil Engineer, Quantity Surveyor, Land Surveyor, Research and Developer Managers



SUITABLE SUBJECTS

**BTEC
Engineering**

**A Level
Maths**

**A Level
Physics**

**A Level
Computer Science**

**A Level
Further Maths**

BUSINESS & ECONOMICS

The global human population has grown rapidly to eight billion, putting even more pressure on the world's scarce resources. What should we produce and how should these goods and services be distributed? Economics is the study of how individuals and groups make decisions using their limited resources to best satisfy their wants, needs and desires. The course focuses on the broad micro and macroeconomic environments, and will look at current issues, such as inequality, globalisation, climate change, unemployment and inflation. You'll explore how every aspect of economics and government decisions influence our daily lives.

Experiential Learning

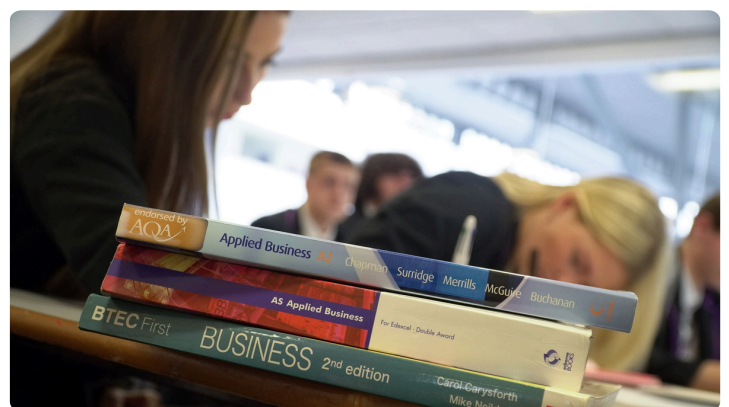
Stock Market Challenge, Community Event Planning, OAP Christmas Dinner Event, Accounting workshops, University visits.



What can I progress to?

University Courses/ Apprenticeships: Accountancy, Business Finance, Economics, Business Management & Law, Management & Leadership, Business & Marketing, Business Analytics, Event Management, Economics & Politics

Careers: Statistician, External Auditor, Accounting, Marketing, Business Analytics, Stock Broker, Sales, Financial Trader, Consulting, Economist, External Auditor



SUITABLE SUBJECTS

A Level
Economics

A Level
Mathematics

BTEC
Business

A Level Further
Mathematics

A Level
Computer Science

COMPUTING

How we use computers and computer programs has utterly defined the world we live in today and it is computer scientists who connect the abstract with reality, creating the products we use daily. With its foundations in Maths, Computer Science spans hardware and software engineering, the user interface, and computer technology's expansion into new areas.

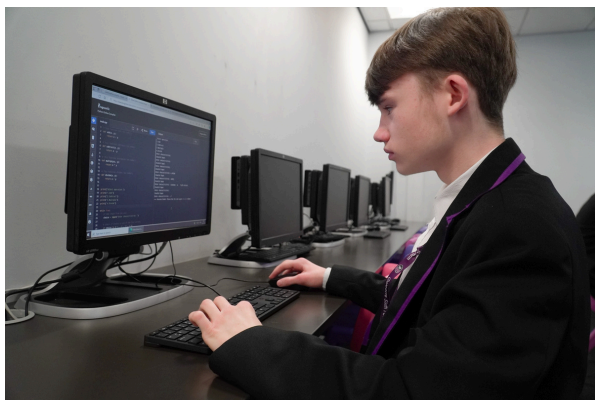
Our Computing pathway will provide you with a deep understanding of computer systems, programming, algorithms, data representation and the ethical implications of new technology. You will be encouraged to think critically, develop logical reasoning and apply computational thinking through studying a wide range of modules and real world challenges.



Where can this pathway take me?

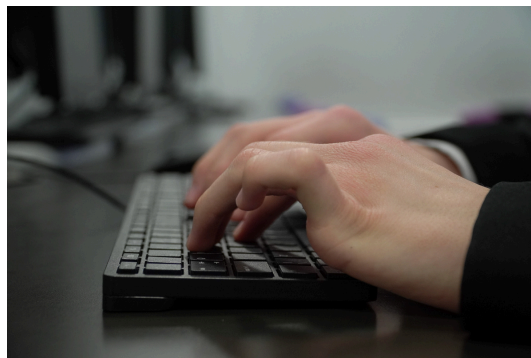
University Courses/Apprenticeships Computer Science, Software Engineering, Cybersecurity

Careers: Cyber Security Analyst, Software Engineer, Technical Architect, Web/Software Developer, Big Data Analyst, App Developer/Programmer, Web/Games Developer, Systems analyst, Network Engineer, Machine Learning Engineer.



Experiential Learning

Bentley Workshops, STEM Careers Days, Bletchley Park, University visits and lecture style seminars



SUITABLE SUBJECTS

A Level
Computer Science

BTEC
IT

A Level
Maths

A Level
Physics

BTEC
Engineering

A Level
Further Maths

CREATIVES

Our Creatives Pathway offers an exciting opportunity to unleash your imagination and develop valuable skills that will serve you well in any career. These subjects encourage innovative thinking and personal expression, allowing you to explore your passions while honing critical analysis and problem-solving abilities. With hands-on projects and collaborative work, you'll not only build technical expertise but also learn to communicate your ideas effectively. Whether you aspire to pursue a career in the arts, media, design, or any field that values creativity, our creatives pathway will empower you to think outside the box and stand out in a competitive job market.



Experiential Learning

Young Artists Summer Show, Lectures style seminars with university partners, Gallery visits: Walker and Tate, Art workshops, industry professional visits, step into university - campus visits.



Where can I progress to on this pathway?

University Courses/ Apprenticeships: Fine Art, Art & Design, History of Art, English Literature, Creative Writing, Drama & Theatre, Writing for Broadcast, Film & Television Studies, Live Events Production, Costume Design

Careers: Ceramic Artist, Illustrator, Graphic designer, Print Maker, Concept Artist, Art Gallery Manager, Fashion Designer, Freelance Photographer, magazine Feature Editor, Advertising Art Director.

SUITABLE SUBJECTS

A Level
Art

A Level
Photography

A Level
Graphics

A Level
Mathematics

A Level
Music

A Level
Drama

A Level
Media

MUSIC AND SOUND



Our music and sound pathway explores academic rigour, creativity and expression.

Our experienced and talented music team at Gateacre Sixth Form will work with students to develop their expertise, attitude and ethos required to succeed in this industry. This pathway is jam packed with experiential learning and students will progress their knowledge and skills whilst solving real world challenges. Whatever type of music you are interest in, you will need talent, dedication and determination to succeed on this pathway and within the music industry.

“Music gives a soul to the universe, wings to the mind, flight to the imagination and life to everything.”
Plato

Experiential Learning

Summer and Christmas concerts; Monday teatime concerts; Whole-school production; Friday Rocks, Bands Night/Industry Day in conjunction with ADLIB AUDIO, University Visits

Where can this pathway take me?

University Courses/ Apprenticeships: Audio Recording, Creative Music Technology, Electronic Music Production, Music and Sound Production, Music Theatre, Music Industry Studies, Music Performance

Careers: Musician, Sound Technician, Recording Studio Manager, Live Sound Engineer, Music Therapist, Songwriter, Composer, Musical Director, Producer.



SUITABLE SUBJECTS

A Level Music

BTEC Sound Engineering

A Level Drama

A Level Media

A Level Photography

A Level Art

PERFORMING

Following our Performing Pathway at Gateacre Sixth Form is a thrilling journey into the world of performance, storytelling, and creative expression. This subjects within this pathway invite you to explore a range of dramatic techniques and styles, allowing you to develop your acting skills while gaining insights into character development, script analysis, music performance, and stagecraft. Through practical workshops, collaborative projects, and live performances, you'll build confidence, enhance your ability to communicate, and cultivate a deep appreciation for the power of theatre.

Experiential Learning

Industry Masterclasses, university visits, Theatre trips, Post Performance Q&As, Guest Speakers, Concerts, Orchestra, Opera trips, Drama Showcase, Musical Theatre masterclass with Edge Hill University,

Where can I progress to on this pathway?

University courses: /Apprenticeships:
Drama, Acting, Drama Therapy, Drama Literature, Performing Arts, Musical Theatre, Performing Arts and Production,

Careers: Author, Screenwriter, Artist, Musician, Talent Agent, Theatre Stage Manager, Singer/Songwriter, Actor, Director, Producer, Designer, Photographer, Sculptor, Stage Technician, Lighting Designer.



SUITABLE SUBJECTS

A Level
Drama

A Level
Media

A Level
English

A Level
Art

A Level
Photography

A Level
Music

BTEC Sound
Engineering

HEALTH AND SOCIAL CARE

The health and social care sector is essential for supporting our local communities and society as a whole. It is continually evolving, creating new strategies and services to assist individuals in need. This pathway will equip you with the skills, knowledge, and understanding necessary for working in health, childcare, or social care environments.

Experiential Learning on our health and social care pathway

There will be the opportunity to undertake a work experience placement to put into practice the skills and knowledge you have learned in the classroom and how these are applied in real-life health and social care settings. Students can also expect to work with our professional partners and gain experience of; hospital visits, collaborative mock ward work skills programme, professional masterclasses, university visits

Where can I progress to on the health and social care pathway?

Many health and social care graduates choose degrees or apprenticeships in; Nursing, Midwifery, Teaching, Social Work or allied professions.

Your future career could include working as; Nurse, Midwife, Healthcare Assistant, Occupational Therapist, Mental Health Practitioner, Social Worker, Youth Worker, Counsellor, Health Service Manager, Community Development Worker.



SUITABLE SUBJECTS

**BTEC Health
and Social Care**

**BTEC Applied
Science**

**A Level
Psychology**

**A Level
Sociology**

**A Level
Biology**

SOCIAL SCIENCE



Our Social Science pathway includes elements of both the Arts and the Sciences. It allows students to develop an understanding of human behaviour and how the systems of law and social rules change over time. You will compare and contrast complex and competing theories and develop an understanding of human behaviour. You will be supported with how to write academic essays and referencing as well as carry out research and experiments and present your findings

Students following this pathway can expect to experience; mock law trials, university campus visits, debates, ted talk sessions, stock market challenge and event planning..

Where can I progress to on the Social Science pathway?

University Courses/ Apprenticeships: Psychology, Clinical Psychology, Anthropology, Psychology and Counselling, Forensic and investigative Psychology, Criminology, Public Services, Sociology, Law, Social Science, Economics, English, Journalism, Business Psychology, Sports Psychology.

Careers: Psychologist, Police officer, Law, Civil Service, Journalism, Researcher, Social worker, Human Resources, Probation Officer, Forensics, Management, Event Planner, Entrepreneur

SUITABLE SUBJECTS

A Level Psychology A Level Sociology Applied Criminology A Level English A Level History BTEC Business Applied Science

ENGLISH AND CREATIVE WRITING

The English and Writing Pathway is an enriching and intellectually rewarding experience that empowers students with essential skills for both academic and professional success. It enhances your ability to communicate clearly and persuasively, sharpens your critical thinking, and fosters creativity through the exploration of diverse literary genres and linguistic techniques. Whether analysing the complexities of a classic novel, crafting thoughtful essays, or engaging in discussions, this pathway builds valuable skills such as effective writing, argumentation, and empathy, all while deepening your understanding of culture, history, and human experience. With its wide range of applications in fields like law, media, journalism, education, and beyond, English A Level is not only a gateway to further study but a key that unlocks countless opportunities for personal and professional growth.

Where can I progress to on this pathway?

University Courses/
Apprenticeships English, English Literature, Creative Writing, Linguistics, Law, Sociology, Psychology, Journalism, History Film/Media, Government and Politics

Careers

Law, Journalism, Lecturing, Publishing, Advertising, Forensics, Politics, Researcher, Editor, Marketing

Experiential Learning

University trips, Writing competitions, Theatre trips, Lecture style seminars



SUITABLE SUBJECTS

A Level

English Language

A Level

English Literature

A Level

Drama

A Level

History

A Level

Media

A Level

Sociology

SPORT SCIENCE

Sport Science is an exciting pathway for those passionate about sports, fitness, and the science behind physical performance. This pathway combines theoretical knowledge with practical application, covering key areas such as physiology, biomechanics, nutrition, and sports psychology. You'll engage in real-world projects, conducting experiments and analyzing data to understand how the body responds to exercise and training. This program not only develops your scientific understanding but also enhances skills like teamwork, leadership, and critical thinking, making it a perfect fit for anyone looking to pursue a career in sports coaching, health and fitness, or sports therapy.



Experiential Learning

Planning and Leading Sports Events, University campus visits to UCFB, LJMU sport science laboratories and Loughborough University, Live dissection events with Postmortem Live, Stadium Visits with LFC and EFC, In person master classes with industry experts.

What can I progress to?

University Courses/Apprenticeships: Physiotherapy, Sports & Exercise Science, Sport & Management, Sport Psychology, Health Science, Sport Coaching, Coaching & Sports Development, Sports Therapy & Rehabilitation, Sports Journalism.

Careers: Physiotherapist, Personal Trainer, Sports Coach, Sports Development, Sports Therapist, Nutritionist, Sports & Exercise Psychologist, Exercise Physiologist, Fitness Centre Manager, Clinical Scientist, PE Teacher, Sports Journalist.

SUITABLE SUBJECTS

BTEC Sport

BTEC Applied Science

BTEC Health and Social Care

A Level Biology

A Level Psychology

A LEVELS OR APPLIED SUBJECTS?

A Level courses and applied courses offer distinct approaches to education, catering to different learning styles and career aspirations.

A Levels are typically more academically rigorous and theory-focused. They are often assessed through written exams and are well-suited for students aiming for university degrees.

In contrast, applied courses are vocational qualifications that emphasise practical skills and real-world applications. They combine coursework with practical assessments and projects, allowing students to gain hands-on experience. Applied courses are particularly beneficial for those looking to enter the workforce directly or pursue careers in applied fields, and they often provide a more flexible and accessible route to higher education, including university courses.

Ultimately, the choice between A Levels and BTEC courses depends on a student's individual learning preferences and career goals.



If you are aspiring towards a specific degree course, it's a good idea to research if they require any specific A Level or Applied qualifications - you may not be able to take the course otherwise.

A LEVEL COURSES

A LEVEL ART

A LEVEL BIOLOGY

A LEVEL CHEMISTRY

A LEVEL COMPUTER SCIENCE

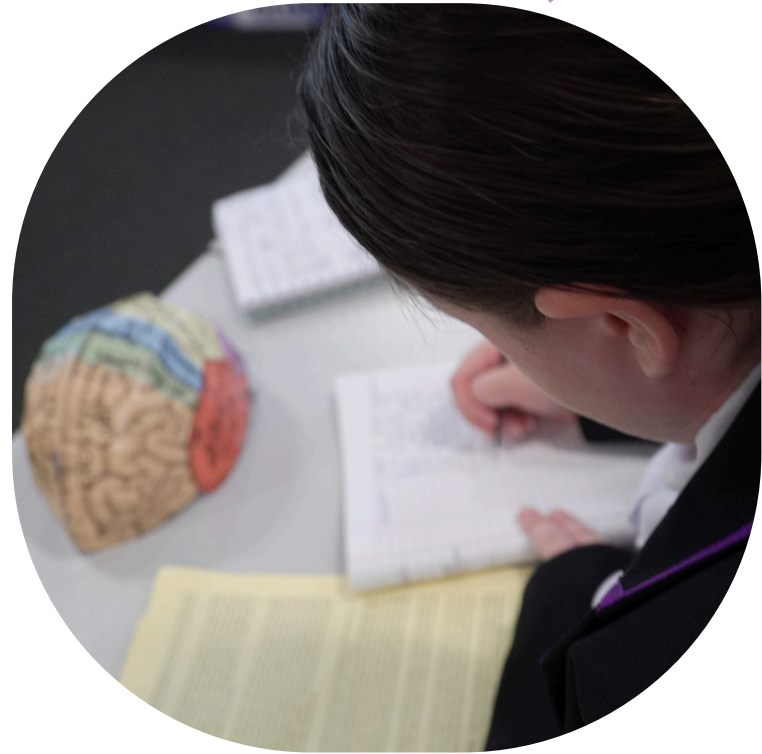
A LEVEL DRAMA & THEATRE STUDIES

A LEVEL ECONOMICS

A LEVEL ENGLISH LANGUAGE

A LEVEL ENGLISH LITERATURE

A LEVEL FURTHER MATHEMATICS



A LEVEL GRAPHICS

A LEVEL HISTORY

A LEVEL MATHEMATICS

A LEVEL MEDIA STUDIES

A LEVEL MUSIC

A LEVEL PHOTOGRAPHY

A LEVEL PHYSICS

A LEVEL PSYCHOLOGY

A LEVEL SOCIOLOGY

A LEVEL SPANISH



APPLIED COURSES

CRIMINOLOGY

BUSINESS

SPORT

INFORMATION TECHNOLOGY

ENGINEERING

HEALTH AND SOCIAL CARE

APPLIED SCIENCE

SOUND ENGINEERING



Scan to find out more information about each individual qualification



WHY CHOOSE GATEACRE?



- Wide range of Level 3 subjects on offer
- Bespoke super curricular offer through subject masterclasses led by dedicated subject experts and our links with researchers in universities.
- All subjects are taught by subject specialists
- Directed study sessions to support students prepare for the independent study skills required to be successful at KS5
- Careers and UCAS support
- Financial support for eligible students through 16-19 Bursary Scheme,
- Small class sizes which allows for greater support from subject experts.
- Pastoral and Academic Support and Guidance on Individualised Programmes of Study.
- A range of enrichment activities to suit a wide variety of interests.
- High Achievers Programme to support students wanting to apply for the most prestigious courses and universities.
- Range of available trips to Universities, theatre/concert visits, Berlin, New York, London, Paris and reward trips: Ice Skating, bowling, Blackpool Pleasure Beach.

HIGH ACHIEVERS PROGRAMME

The world's leading universities demand of their students the rigorous application of creative and critical thinking. On the high achievers programme you will be stretched, challenged and encouraged to consider innovatively your subjects, problems and issues.

You will investigate how to use what you have learned in the wider world. Practical application is at the core of the high achiever programme, when you will be fully immersed in the mindset embracing new ideas, developing resilience and mastering the art of self-guided study so you can achieve your aspirations. You will channel your thinking across a wide range of activities and workshops to broaden your horizons and develop the skills to get you ready to excel in higher education.



MAGDALENE
COLLEGE
CAMBRIDGE



Oxbridge Mentoring with Aspire Liverpool and Magdalene College, Cambridge.

Students on our high achiever programme will have access to working with our Oxbridge mentoring partners to support their applications to these prestigious universities. Students can expect to visit the universities and engage with subject masterclasses.

The Sutton Trust - Pathways to Banking and Finance, Engineering, Law

Our partnership with the University of Liverpool and The Sutton Trust provides students with an invaluable experience if they are aspiring to progress towards a career in law, banking and finance or engineering. Eligible students can expect to gain a work experience placement with a leading employer, engage with skills workshops and information sessions, mentoring opportunities, networking events with universities and leading professionals and a residential packed full of experiences to develop the skills needed to be successful in the respective industries.



University of Liverpool Scholars Programme

The Liverpool Scholars programme offers Year 12 students the chance to take part in a range of activities aimed at supporting their entry into higher education and preparing them for university, such as application guidance masterclasses, lectures and academic key skills workshops. These activities are delivered in partnership with academics, undergraduates and the wider University.



Gateacre's Super Curricular

Students have the opportunity to engage with our comprehensive super-curricular programme, designed to enhance their academic development. This programme includes participation in subject-specific masterclasses in collaboration with university partners, debate seminars, research journal reviews with specialist staff, independent research investigations, writing challenges, industry competitions, and a variety of academic trips and visits. These activities aim to foster critical thinking, deepen subject knowledge, and provide valuable exposure to real-world applications of academic theory.



Extended Project Qualification

The Extended Project Qualification (EPQ) at A Level offers students a unique opportunity to dive deep into a topic of their choice, fostering independent research and critical thinking skills that are invaluable for higher education and beyond. This qualification encourages creativity and initiative, allowing learners to design and execute a project that aligns with their interests, whether it's a dissertation, a practical project, or an artistic endeavor. With the support of our dedicated supervisor, Miss Thomas - students develop essential skills in planning, time management, and presentation, setting them apart in university applications and future careers. Embrace the chance to explore your passions and showcase your abilities with the EPQ, an enriching experience that prepares you for the challenges ahead!

Students can opt to study our EPQ qualifications alongside the three A Level/Vocational qualifications.



HOW TO APPLY



The following process outlines what you need to do and how we will support you to make the best choice for your future:

- Read the information about the subjects in this prospectus carefully and talk to your teachers about them.
- Think about the subjects you are most interested in. Students are always successful at the subjects they enjoy and can do.
- Talk to your teachers about your ability and your forecasted grades. Ability is also essential for success.
- If you already think you know what you want to do at University or a future career find out if there are any subjects you have to study. The UCAS website will help you.
- Attend the Open Evening. This will be an opportunity to speak to Subject Leaders about the courses on offer.
- Application Forms are available on our website. Scan the QR Code below to go directly to the application form.

APPLICATION FORM



NOVEMBER 2024

ATTEND OUR OPEN EVENING & APPLICATION WINDOW OPENS

Prospective students are encouraged to attend our open event to hear about our curriculum offer and discuss course aspirations with our subject teachers.



FEBRUARY 2025

DEADLINE FOR SIXTH FORM APPLICATIONS

The deadline for applications is Friday 28th February, 2024. Course Consultation will take place between March and April.



APRIL 2025

APPLICATION FEEDBACK

Following our course consultation meetings and assessment of student forecasted grades, we will make provisional decisions on student applications.



JULY 2025

ATTEND OUR SUBJECT TASTER DAY

After Year 11 exams are over, all offer holders will be invited to our Sixth Form Taster Day to try your subjects and really get a feel for what life will be like for you as a Gateacre Sixth Form student.



AUGUST 2025

RESULTS DAY

Providing the necessary entry criteria has been met, students can enroll with us to start in September.

ENROL

