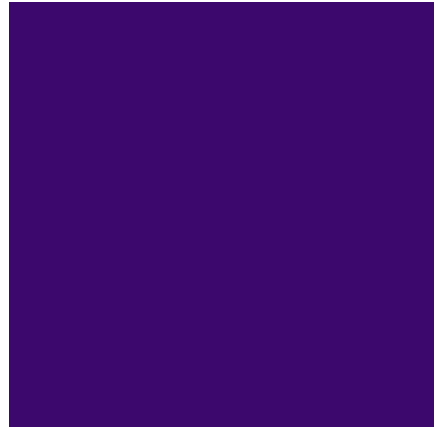
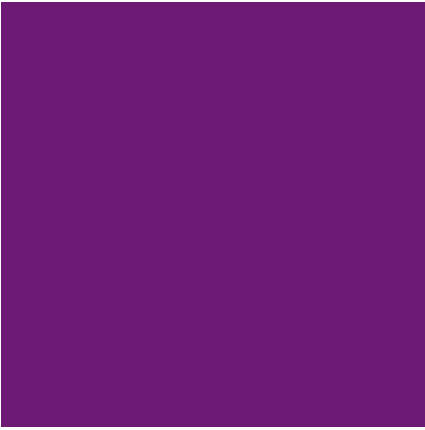
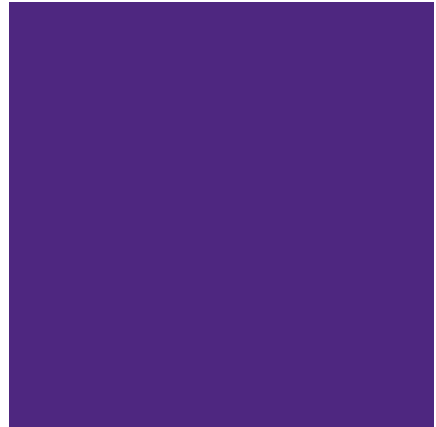
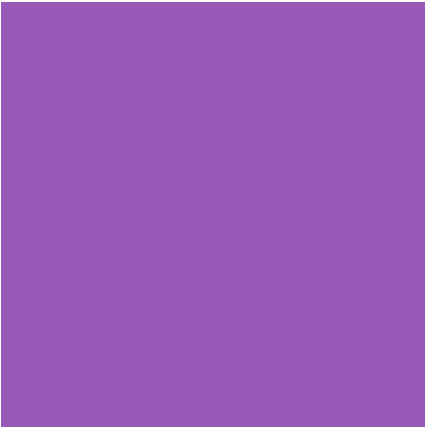




www.gateacre.org/sixth-form -home 0151 363 1111



GATEACRE
SCHOOL
SIXTH
FORM



PROSPECTUS 2024/25



CONTENTS

Page 3 Why choose Gateacre?

Page 4 Entry requirements

Page 5 Enrichment

Page 6 Pathways

Page 12 How to apply

Page 13 Course list

Page 14 Subject pages



WHY CHOOSE GATEACRE?

- Wide range of Level 3 subjects on offer.
- All subjects are taught by subject specialists.
- Small class sizes.
- Pastoral and Academic Support and Guidance on Individualised Programmes of Study.
- A range of enrichment activities to suit a wide variety of interests.
- Honours Pathway for High Achievers includes Liverpool University Scholars Programme, Sutton Trust Pathways to Law / Pathways to Engineering
- Range of available trips to Universities, theatre/concert visits, bowling, Blackpool, Berlin, New York, London
- Event planning and fundraising Activities including, Local Pensioners Xmas Lunch, Bands Night, Hampers for the Homeless.

COURSES AVAILABLE AND ENTRY REQUIREMENTS

Level 3 courses: Level 3 courses are at a level of study that is higher than the work undertaken in Year 11 and prepare students for entry to university.

The entry requirements for a level 3 programme of study is at least 5 separate subjects at grade 4 or above, including English and Maths. There are two types of qualification at Level 3. If you wish to study A Levels you will be expected to have a grade 5 in the subjects that you choose and some subjects have specific entry requirements. Maths, Spanish and the Science A Levels require a minimum grade 6.

We also have a range of Level 3 BTECs on offer which are equivalent to A Levels but have an element of ongoing assessment as well as examinations.

Students will also be expected to have a good record of behaviour and attendance.



ENRICHMENT ACTIVITIES

All students in the Sixth Form follow an enrichment course. This comprises of one lesson a week of a non-examination topic. Students have a wide selection of courses which include: Ukelele for Beginners; film & media club, chess club, holiday Spanish, driving theory, debate Club and Mindhunters.

We have various trips throughout the year including to different Universities, theatre/concert trips, Bowling, Blackpool, New York and Berlin.

Students are also encouraged to organise and participate in various fundraising events such as Christmas lunch for local pensioners, Open mic/Acoustic nights, Christmas hampers for the homeless. We also offer a range of Leadership opportunities such as Peer mentoring, Reading with Year 7, Lunch time supervision, student voice leaders.





OUR PATHWAYS

We've grouped together our wide range of subjects into career pathways, containing complementary subjects to help you choose the best courses for your career goal.

It is really important that you participate in extra-curricular activities which will develop your character and also give you additional experiences that make you stand out to future employers and University admissions.

Our pathways are designed to provide you with these additional experiences and support alongside your chosen subjects.

Another successful qualification we offer to our Year 13 students is the Extended Project Qualification (EPQ) This is an AS qualification which will give you additional UCAS points for University. It allows students to study a specific area of their own interest and develop academic writing and research skills.



HONOURS PATHWAY

We encourage all of our students to be the Best They Can Be. Our Honours Pathway is designed to support our High achievers with the skills, support and experiences for needed for Oxford, Cambridge and other Russell Group Universities.

High Achievers at GCSE will be selected for this pathway after enrolment. Students on this pathway will be eligible to apply for the Liverpool University Scholars Programme, Sutton Trust Pathways to Law and Engineering as well as the Aspire programme for Oxbridge applicants.

This pathway will include the Extended Project Qualification. This is an AS qualification which will give you additional UCAS points for University. It allows students to study a specific area of their own interest and develop academic writing and research skills.



SUITABLE SUBJECTS

Art
Ceramics
Photography
Drama & Theatre Studies
Music
Music Technology
IT
Sport
Media
English Lit
English Lang

CREATIVE PATHWAY



This pathway will support you to develop presentation and communication skills and grow in confidence with public speaking and engaging with others. You will be supported with building portfolios or audition pieces for University or Apprenticeships.

CAREERS

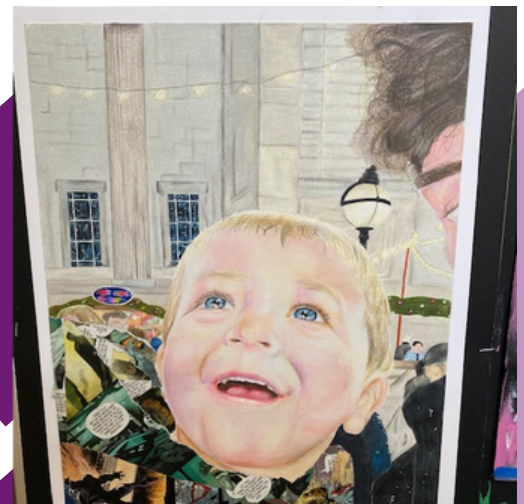
Author, Screenwriter, Artist, Musician, Sound Engineer, Singer/Songwriter, Actor, Director, Producer, Designer, Photographer, Sculptor, Stage Technician, Lighting Designer.

ENRICHMENT

Industry Masterclasses, Bands Night, Theatre trips, Post Performance Q&As, Guest Speakers, Primary school workshops, Lantern Parade, Concerts, Orchestra, Opera trips.

FUN FACT

The most expensive Banksy artwork ever auctioned off is "Love is in the Bin". This half-shredded artwork, created by the anonymous British street artist Banksy in 2018, achieved a staggering price of £18,582,000



SUITABLE SUBJECTS

English Lang
English Lit
Drama & Theatre Studies
Media
History
Sociology
Psychology
Spanish



ENGLISH & WRITING PATHWAY

This pathway will support you to develop critical thinking and enhance your understanding of the world. You will develop analytical skills as well as formal writing, the ability to 'read between the lines'. You will be supported to construct coherent and convincing arguments and strengthen your communication skills.

CAREERS

Journalism, Law, Teaching/Lecturing, Author, Critic, publishing, Advertising, Human Resources, Politics.

ENRICHMENT

University trips, Writing competitions, Sutton Trust Pathway to Law, Theatre trips, writing competitions, Spanish Culture Trip.

FUN FACT

J.K Rowling studied A Level English and is now worth £795 million.

SUITABLE SUBJECTS

Biology
Chemistry
Physics
Maths
Psychology



SCIENCE PATHWAY

Our Science Pathway will support you to develop the skills and experiences you will need for applying to some of the most competitive courses such as Medicine, Dentistry, Engineering. You will develop skills in practical techniques and processes. You will be able to analyse and interpret data and broaden your understanding of the world around us.

CAREERS

Doctor, Dentist, Vet, Engineer, Marine Biologist, Accountant, Pharmacist, Astronomist, Optician, Crop management, Psychologist.

ENRICHMENT

Sutton Trust Pathway to Engineering, University visits, STEM club, Liverpool University Maths mentors, Problem Solving events, Liverpool Uni mechanics problem solving.

FUN FACT

Sir David Attenborough studied Zoology and Geology as well as gaining a Masters Degree in Natural Sciences at Cambridge.



SUITABLE SUBJECTS

Sociology
Psychology
Criminology
Business
Applied Science
English Lit
English Lang
History
Media
IT



SOCIAL SCIENCE PATHWAY

Our Social Science pathway includes elements of both the Arts and the Sciences. It allows students to develop an understanding of human behaviour and how the systems of law and social rules change over time. You will compare and contrast complex and competing theories and develop an understanding of human behaviour. You will be supported with how to write academic essays and referencing as well as carry out research and experiments and present your findings.

CAREERS

Psychologist, Police officer, Law, Civil Service, Journalism, Researcher, Social worker, Human Resources, Probation Officer, Forensics, Management, Event Planner, Entrepreneur

ENRICHMENT

Mock Law Trials, University visits, Sutton Trust Pathway to Law, Debates, Ted Talk sessions, Stockmarket Challenge, Event planning.

FUN FACT

Michelle Obama majored in Sociology at Princeton University.

HOW TO APPLY



The following process outlines what you need to do and how we will support you to make the best choice for your future:

- Read the information about the subjects in this prospectus carefully and talk to your teachers about them.
- Think about the subjects you are most interested in. Students are always successful at the subjects they enjoy and can do.
- Talk to your teachers about your ability and your estimated grades. Ability is also essential for success.
- If you already think you know what you want to do at University or a future career find out if there are any subjects you have to study. The UCAS website will help you.
- Attend the Open Evening. This will be an opportunity to speak to Subject Leaders about the courses on offer.
- Application Forms are available on our website. Scan the QR Code below to go directly to the application form.
- If you have a good record of behaviour and attendance, you will be invited to attend a short interview in the Summer Term where you will be given a conditional offer of a place in our Sixth Form.
- If you wish to change your options after this time, we will do all we can to support you but after the timetable is written this will only be possible if a class is not full and the subjects you wish to study are not timetabled at the same time.

Once you receive your GCSE results we can confirm your course and subject choices. Enrolment will take place on GCSE results day.

APPLICATION FORM

**GATEACRE
STUDENT**



**EXTERNAL
STUDENT**





SUBJECT PAGES

Level 3 subjects:

- **Applied Science**
- **Art**
- **Biology**
- **Business**
- **Ceramics**
- **Chemistry**
- **Criminology**
- **Drama & Theatre Studies**
- **English Language**
- **English Literature**
- **History**
- **Information Technology**
- **Mathematics**
- **Media Studies**
- **Music**
- **Photography**
- **Physics**
- **Psychology**
- **Sociology**
- **Sound Engineering**
- **Spanish**
- **Sport**

APPLIED SCIENCE BTEC

**JOIN US FROM SEPTEMBER 2024 TO COMPLETE
THE PEARSON BTEC LEVEL 3 EXTENDED
CERTIFICATE IN APPLIED SCIENCE.**

Students will study a two year course equivalent to 1 A-Level, with topics relating to all three sciences.

Units of study include:

- Principles and Applications of Science
- Practical Scientific Procedures and Techniques
- Science Investigation Skills
- Disease and Infections

Pearson is the UK's largest awarding body offering academic and vocational qualifications that are globally recognised and benchmarked.

A-Level and UCAS Points Equivalency

BTEC	A LEVEL	UCAS POINTS
D*	A*	56
D	A	48
M	C	32



Applied science would suit students with an interest in a wide range of biology, chemistry and physics careers, including biomedical sciences, pharmacy, radiology and forensics.

Assessment is a blend of coursework and exam. The coursework aspect of the BTEC encourages students to develop their investigative and research skills, through a variety of scientific investigations and laboratory/university visits.

For detailed information of the BTEC Applied Science course:

<https://qualifications.pearson.com/en/qualifications/btec-nationals/applied-science-2016.html>

Further details are available from:

Ms Harris or Miss Robinson on

c.harris@gateacre.org, a.robinson@gateacre.org

ART AND DESIGN A LEVEL

A LEVEL ART AND DESIGN (EDUQAS BOARD)

Over this two year course, pupils are supported on a visual and creative journey, which focuses on the learner's personal progress. Students are encouraged to explore and experiment across a broad range of materials, developing personal ideas along the way. Students opting for A'level art will be expected to have completed GCSE Art and/or GCSE Graphic design.

Art and Design

This creative and exciting course involves pupils experiencing new and developing practical skills. These will include drawing and painting, photography, graphics , mixed media, digital art, and art textiles and ceramics.

The course is a chance to visually explore and promote your own style and skill. You're given creative freedom to approach tasks in a personal way and develop your individual strengths to produce final outcomes. If you have any queries about the course please come and ask the art staff or current art artists, who will be happy to help.

Course Details:

The full A-Level qualification is made up of-

Unit 1 60% - Coursework portfolio, 1 very personal project (y12-13).

Plus a written study (1000 - 3000 words).

Unit 2 40% - Controlled Assignment: 15 hr exam, plus prep work.

Possible Careers

Contemporary artist

Graphic design

• Magazine publisher

• Animation/Illustration/Advertisement

• Fashion and textile design/Promotion/Buyer

Jewellery/3D design/Stage set design

Teacher, Architect, Curator, Art historian, Art therapist.



Careers in the creative sector are one of the fastest growing in the UK. The creative industry provides around two million jobs, and employment and is growing at double the rate of the economy as a whole. Come and start your artistic path to the future

In the art department we pride ourselves on the excellent exam results achieved year upon year. We have established a record of success in Art, with 100% A-C results maintained over a several years.

If you're interested in further information , please speak to any member of staff and/or our A'Level students.

A LEVEL BIOLOGY

Biology is the science of life and how living things work.

Biology is a useful qualification for many courses and careers including Biomedical engineering, Nursing, Healthcare of people and animals, Optician, Environmental Health Sciences, Biotechnology, Physiologist, Natural Resource Management, Wildlife Biologist, Archaeology, Marine Biology, Forest management, Agricultural Industries, Anthropology, Teacher Training, Ecology, Fish Farming, Crop Management, Nutritionists and many more!

Entry requirements:

Learners will need to have at least a grade 6-6 in GCSE Combined Science; a strong footing in GCSE Mathematics is also recommended with a 6 grade being highly recommended.

The course followed will be the new AQA Biology GCE Advanced course which consists of AS studied at Year 12 and A2 in Year13.



Course Details (Nb - page numbers refer to the specification document available on www.AQA.org.uk)

Further details are available from:

• **Mr Byrne on p.byrne@gateacre.org**

2.1 Subject content

Core content

- 1 [Biological molecules](#) (page 11)
- 2 [Cells](#) (page 19)
- 3 [Organisms exchange substances with their environment](#) (page 25)
- 4 [Genetic information, variation and relationships between organisms](#) (page 30)
- 5 [Energy transfers in and between organisms](#) (A-level only) (page 36)
- 6 [Organisms respond to changes in their internal and external environments](#) (A-level only) (page 41)
- 7 [Genetics, populations, evolution and ecosystems](#) (A-level only) (page 47)
- 8 [The control of gene expression](#) (A-level only) (page 51)

APPLIED BUSINESS BTEC

The AQA Level 3 Certificate in Applied Business will give students the opportunity to learn and understand the fundamental business and entrepreneurial knowledge and skills associated with working within a business enterprise.

Students will understand the way in which any venture in business (big or small) is a function of the relationship between its people, its marketing, its finance and its ability to deliver operationally upon its commitments.

Students will undertake a programme of assessment designed to assess not only their business knowledge and understanding, but also the way in which this knowledge and understanding can be applied to shape their practical skill in thinking and realising their own plans about business. For those who wish their learning to be practical and active, making use of their own business imagination, then the Certificate in Applied Business is a highly relevant qualification.

Year 12 culminates in Unit 3 Entrepreneurial Opportunities, which brings together key elements from units 1 and 2 into a practical, synoptic assessment of the learner's readiness for entrepreneurial activity and opportunity. This practical unit can be used as the seed for further study in the Extended Certificate (via the Business proposal unit) or as the basis for the learner's own initial business venture.

Year 13 makes is practical and hands on were students get to apply their knowledge and organise and event and write a business plan. Both these units are assessed through written coursework. The final unit is an exam which focuses on motivation, leadership and management.

A level Business is a practical course and in recent years students have had the opportunity to visit New York to learn about business in other countries. An exciting and practical course, a break down the study programme is below.

If you have any questions, please speak to Mr Danson or email p.danson@gateacre.org

UNIT	UNIT TITLE	ASSESSMENT
1	Financial planning and analysis	External examination
2	Business dynamics	Internally centre assessed
3	Entrepreneurial opportunities (synoptic assessment unit)	External examination
4	Managing and leading people	External examination
5	Developing a business proposal (synoptic assessment unit)	Internally centre assessed
6	Managing an event	Internally centre assessed



CERAMICS A LEVEL

A-LEVEL ART: 3D DESIGN FOCUS IN CERAMICS (EDUQAS BOARD)

This is a new art based course that would sit perfectly alongside other art subjects on offer at Sixth Form. Over this two year course, pupils are supported on a visual and creative journey, which focuses on the learner's personal progress. Students are encouraged to explore and experiment across a broad range of materials, developing personal ideas along the way. Students opting for A'level art will be expected to have completed GCSE Art.

Ceramics (3D design)

This creative and exciting course involves pupils experiencing new and developing practical skills. These will include the fundamental skills of drawing and painting, alongside working in 2d and 3d design, using ceramics as the main skill set. The course is a chance to visually explore and promote your own style and skill. You're given creative freedom to approach tasks in a personal way and develop your individual strengths to produce final outcomes. If you have any queries about the course please come and ask the art staff, who will be happy to help.

Course Details:

The full A-Level qualification is made up of

Unit 1 60% - Personal investigation, one very personal project of work (y12-13). Plus a written study (1000 - 3000 words).

Unit 2 40% - Externally Set Assignment: 15 hr exam, plus prep work.



Possible Careers:

- Contemporary artist
 - 3D design
 - Ceramicist
 - Animation
 - Illustration
 - Jewellery
- Stage set design
 - Teacher
 - Curator
- Art historian
- Art therapist

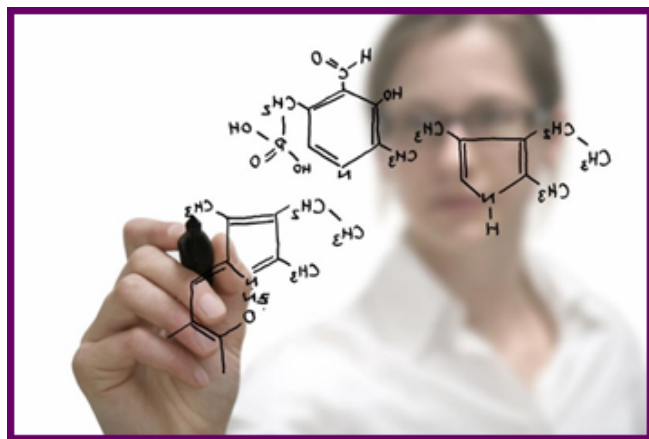
Careers in the creative sector are one of the fastest growing in the UK. The creative industry provides around two million jobs, and employment is growing at double the rate of the economy as a whole. Come and start your artistic path to the future. In the art department we pride ourselves on the excellent exam results achieved year upon year.

If you're interested in further information, please speak to any member of the Art Department staff.

A LEVEL CHEMISTRY

Chemistry is essential for those going on to study the subject itself or any of the following: Biology, Biochemistry, Medicine, Dentistry, Pharmacy, Food Science or Chemical Engineering. It is strongly recommended for those Interested in Earth Sciences such as Geology or Metallurgy.

Chemistry is a useful qualification for many courses and careers including Psychology, Computer Studies, Accountancy and many more!



Entry requirements:

Learners will need to have at least a grade 6-6 in GCSE Combined Science; a strong footing in GCSE Mathematics is also recommended with a 6 grade being highly recommended.

The course followed will be the new AQA Chemistry GCE Advanced course, which consists of AS which is studied in Year 12 and A2 in Year 13.

Course Details

Nb - the list for chemistry is extensive but can be viewed on

<https://www.aqa.org.uk/subjects/science/as-and-a-level/chemistry-7404-7405/specification-at-a-glance>

Further details are available from:

Mr Stopford on

k.stopford@gateacre.org

The assessment for the A-level consists of three exams

Paper 1	Paper 2	Paper 3
What's assessed <ul style="list-style-type: none">Relevant Physical chemistry topics (sections 3.1.1 to 3.1.4, 3.1.6 to 3.1.8 and 3.1.10 to 3.1.12)Inorganic chemistry (section 3.2)Relevant practical skills	What's assessed <ul style="list-style-type: none">Relevant Physical chemistry topics (sections 3.1.2 to 3.1.6 and 3.1.9)Organic chemistry (section 3.3)Relevant practical skills	What's assessed <ul style="list-style-type: none">Any contentAny practical skills
How it's assessed <ul style="list-style-type: none">Written exam: 2 hours105 marks35% of A-level	How it's assessed <ul style="list-style-type: none">Written exam: 2 hours105 marks35% of A-level	How it's assessed <ul style="list-style-type: none">Written exam: 2 hours90 marks30% of A-level
Questions <ul style="list-style-type: none">105 marks of short and long answer questions	Questions <ul style="list-style-type: none">105 marks of short and long answer questions	Questions <ul style="list-style-type: none">40 marks of questions on practical techniques and data analysis20 marks of questions testing across the specification30 marks of multiple choice questions

CRIMINOLOGY

What is Criminology?

Criminology is an exciting and innovative new subject option here at Gateacre. Throughout the course you will explore different aspects of criminality and the criminal justice system, with a clear emphasis on the impact that crime has upon society. You will study issues such as victimisation, the legal process in the UK as well as gaining a theoretical understanding of crime and deviance, giving you an insight into the reasons why people turn to crime and how this has real-world impacts on individuals and communities.



What will I study?

In Unit 1: Changing awareness of crime you will explore the different types of crime that people commit and the reasons behind those crimes. This unit will seek to dispel some of the myths and stereotypes surrounding crime, giving you a more accurate picture of the complexities surrounding the nature and extent of crime in society today. When it comes to public and social policy, lawmakers and politicians often turn to the academic community to provide them with the evidence and theoretical justification for their solutions to problems in society. Unit 2: Criminological theories, will provide insight into the theory of criminality and give you the opportunity to critically examine these explanations by challenging existing beliefs. Unit 3: Crime scene to courtroom, will take you on a journey from when a crime is initially detected, through to the verdict in a courtroom. Finally, Unit 4: Crime scene and punishment, will explore the societal mechanisms, processes, institutions and agencies that are involved in either preventing crime in the first instance or how society deals with offenders once a crime has occurred.

Assessment

This qualification is a Level 3 Applied Diploma using the WJEC specification. It is the equivalent of an A-level, so for example achieving an A grade in Criminology will give you 48 UCAS tariff points, just like any other A-level. Over the two year course, you will be assessed using internal controlled assessments as well as external exams. Each of the units gives equal weight to your final overall result.

If you have any questions, please speak to Mr Smith or email p.smith@gateacre.org

UNIT	TITLE	ASSESSMENT	% OF QUALIFICATION
1	Changing awareness of crime	Controlled	25
2	Criminological theories	Exam	25
3	Crime scene to courtroom	Controlled	25
4	Crime scene and punishment	Exam	25

A LEVEL DRAMA & THEATRE STUDIES

Why choose this course?

Drama and Theatre can open many doors to many different careers. This is an academic A Level and therefore it has currency for a range of degrees. Universities recognise the value of this subject as it develops skills that can be applied to most areas of study: team work, communication and presentation skills, self motivation and responsibility, time management, analytical skills, confidence and high levels of creativity. There is a strong practical element to the course with options for students interested in art, design, media or music to hone their skills through developing specialisms in costume, set, sound, lighting, etc. Alongside this, the theoretical aspects of the course allow students to develop their analytical skills and written communication. Students who study Drama, therefore, can also often go on to being accepted onto wider ranging degree courses such as Medicine, Law, English and Business.

Further Information:

- It is recommended that candidates who wish to pursue this A Level have a grade 4 or above in GCSE Drama.
- You will be welcomed into a vibrant and busy department with state of the art facilities. We will also use our industry links to organise supportive practical workshops run by a range of professional actors, directors and theatre companies.
- You will be able to attend several theatre visits a year at different locations across the UK and a residential trip.
- You will also have the opportunity to participate in a wide range of extra curricular events such as theatre in education projects, showcases, school productions, external projects and parades, etc.
- You will be taught by teachers who have industry experience and who pride themselves on a 100% A*-B pass rate for all practical performances.

If you have any questions whatsoever, please speak to Mrs Gash, Head of Drama or email her at e.gash@gateacre.org



Component 1: Drama and theatre	Component 2: Creating original drama (practical)	Component 3: Making theatre (practical)
<p>What's assessed</p> <ul style="list-style-type: none"> • Knowledge and understanding of drama and theatre. • Study of two set plays, one chosen from List A, one chosen from List B. • Analysis and evaluation of the work of live theatre makers. 	<p>What's assessed</p> <ul style="list-style-type: none"> • Process of creating devised drama. • Performance of devised drama (students may contribute as performer, designer or director). <p>Devised piece must be influenced by the work and methodologies of one prescribed practitioner.</p>	<p>What's assessed</p> <ul style="list-style-type: none"> • Practical exploration and interpretation of three extracts (Extract 1, 2 and 3) each taken from a different play. Methodology of a prescribed practitioner must be applied to Extract 3. Extract 3 is to be performed as a final assessed piece (students may contribute as performer, designer or director). • Reflective report analysing and evaluating theatrical interpretation of all three extracts.
<p>How it's assessed</p> <ul style="list-style-type: none"> • Written exam: 3 hours • Open book • 80 marks • 40% of A-level 	<p>How it's assessed</p> <ul style="list-style-type: none"> • Working notebook (40 marks) • Devised performance (20 marks) • 60 marks in total • 30% of A-level 	<p>How it's assessed</p> <ul style="list-style-type: none"> • Performance of Extract 3 (40 marks) • Reflective report (20 marks) • 60 marks in total • 30% of A-level
<p>Questions</p> <ul style="list-style-type: none"> • Section A: one question (from a choice) on one of the set plays from List A (25 marks). • Section B: one three part question on a given extract from one of the set plays from List B (30 marks). • Section C: one question (from a choice) on the work of theatre makers in a single live theatre production (25 marks). 	<p>This component is marked by teachers and moderated by AQA.</p>	<p>This component is marked by AQA.</p>

A LEVEL ENGLISH

The English Department offers two courses at A Level: A Level English Language and A Level English Literature. Both qualifications are well respected and desirable for all university Bachelor of Arts courses and develop the following skills:

- Communication skills
- Analytic skills
- The ability to 'read between the lines'
- Use of technical language
- Formal essay writing
- The ability to construct a coherent and convincing argument
- Critical thinking skills – the ability to question the world around us

A qualification in English is an asset to a wide range of professions including: journalism (television and print), publishing, advertising, teaching, Human Resources, law, politics, counselling, management and university administration.

Why choose an A Level English course?

- You enjoy reading and discussing ideas about what you have read.
- You are interested in analysing how language is used to convey ideas about people, places, society, history and politics.
- You are interested in how society works and the effects this has on people and places.
- You enjoy expressing yourself through writing and using language to convey ideas and meaning precisely.



A LEVEL ENGLISH LITERATURE

Entry requirements: GCSE Grade 5 or above in English Language or English Literature

English Literature is one of the most popular and successful A level subjects at Gateacre. Students study a variety of literary periods and genres and are introduced to the conventions of literary study and critical thinking. The course also focuses on the social, historical and cultural contexts in which literary texts are written and understood. Candidates must have an interest in Literature and enjoy reading. Enthusiasm for writing is also advantageous.

SUMMARY OF ASSESSMENT

Component 1

Poetry

Written examination – 2 hours - 30% of qualification

Section A - Poetry pre-1900 (open-book, clean copy)

One two-part question based on the reading of one pre-1900 poetry text from a prescribed list (The Miller's Tale, Chaucer)

Section B - Poetry post-1900 (open-book, clean copy)

One question from a choice of two based on the reading of two post-1900 poetry texts from a prescribed list (Carol Anne Duffy Mean Time & Philip Larkin The Whitsun Weddings)

Component 2

Drama

Written examination – 2 hours - 30% of qualification

Section A - Shakespeare (closed book)

One two-part question based on the reading of one Shakespeare play from a prescribed list (King Lear)

Section B - Drama (closed book)

One question from a choice of two based on the reading of a pair of plays: one pre-1900 and one post-1900, from a prescribed list

(Tennessee Williams A Street Car named Desire & John Webster, The Duchess of Malfi)

Component 3

Unseen Texts

Written examination – 2 hours - 20% of qualification

Section A - Unseen prose

One question from a choice of two, analysing an unseen passage of prose, taken from one of two

prescribed periods for study

Section B - Unseen poetry

One question from a choice of two, analysing an unseen poem or poetry extract

Component 4

Prose study

Non-exam assessment - 20% of qualification

One 2500-3500 word assignment based on the reading of two prose texts from different periods, one

pre-2000 (Remains of the Day, Kazuo Ishiguro) and one post-2000 (Atonement, Ian McEwan).



If you have any questions, please speak to Ms Cleary, Mr Murray or Mr Christoffer or email k.cleary@gateacre.org, k.murray@gateacre.org, p.christoffer@gateacre.org

A LEVEL ENGLISH LANGUAGE

Entry requirements: GCSE Grade 5 or above in Language or Literature

English Language is one of the most popular and successful A level subjects at Gateacre. It covers many aspects of language including how children learn language, how language is structured, how we recognise varieties of English, how language operates within society and how language changes over time. Pupils are also given the opportunity to practise their own writing for different audiences and purposes, and are expected to conduct their own research and report on it. The 'A' level is accepted by all universities and would be of direct interest to most Arts students. Candidates would be expected to have an interest in language and to have shown enthusiasm for creative writing.

Paper 1: Language, the individual and society

Written exam: 2 hours 30 minutes; 100 marks; 40% of A-level

What's assessed?

Textual variations and representations

Children's language development (0 - 11 years)

Methods of language analysis are integrated into the activities

Section A - Textual variations and representations

- Two texts (one contemporary and one older text) linked by topic or theme.

- A question requiring analysis of one text

- A question requiring analysis of a second text

- A question requiring comparison of the two texts

Section B - Children's language development

- A discursive essay on children's language development, with a choice of two questions where the data provided will focus on spoken, written or multimodal language.

Paper 2: Language diversity and change

Written exam: 2 hours 30 minutes; 100 marks; 40% of A-level

What's assessed?

Language diversity and change; language discourses; writing skills (methods of language analysis are integrated into the activities)

Section A - Diversity and change

One question from a choice of two:

either: an evaluative essay on language diversity

or: an evaluative essay on language change

Section B - Language discourses

Two texts about a topic linked to the study of diversity and change.

- question requiring analysis of how the texts use language to present ideas, attitudes and opinions

- A directed writing task linked to the same topic and the ideas in the texts

Non-exam assessment (coursework): Language in action

Word count: 3,500; 20% of A-level assessed by teachers moderated by AQA

What's assessed?

- Language investigation

- Original writing

- Methods of language analysis are integrated into the activities

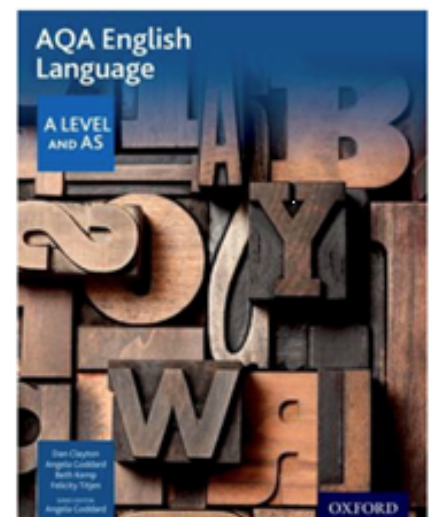
Tasks

Students produce:

1. A language investigation (2,000 words excluding data)

2. A piece of original writing and commentary (1,500 words total)

If you have any questions, please speak to Ms Cleary or Miss Kilner or email k.cleary@gateacre.org h.kilner@gateacre.org



A LEVEL HISTORY

Why choose History?

History gives us a better understanding of the world we live in. It is a subject that helps develop analytical skills, communication skills and research skills. You will develop valuable life skills, such as analysis, evaluation and discussion. History is highly regarded by employers and universities. The History Department at Gateacre School has a proud record of academic achievement.

What do our students say about A-level History?

With A-level history there is always something that you will find interesting no matter the topic and the teachers are amazing; they'll make sure you understand everything you need to and just make the whole experience better.

Regan, Year 13 student, 2021.

"A Level History is not only interesting, but I have found that the skills I have learnt and improved on has helped me in other subjects and has set me up with skills that are going to be useful for Uni. The topics are definitely interesting, and you will be sure to enjoy History."

Taylor, Year 13 student, 2021.

How can History help a students career?

There are so many careers out there that require the skills that studying history develops. These include: Law; Journalism; Research; Politics; Business, Finance and accountancy; and many more!

If you have any questions, please speak to Mr Davies or email m.davies@gateacre.org



TOPICS	CONTENT	ASSESSMENT
Component 1 The Tudors: England, 1485-1603	How did the Tudors secure the throne? Was there a mid-Tudor crisis? Was the Elizabethan age really "golden"? In this unit you will explore one of the most famous periods of history in a completely different way than before. This thematic study looks at how England developed into a world superpower under the famous Tudor monarchs.	Examination at end of course (40%)
Component 2 Democracy and Nazism: Germany 1918-1945	Why was the Weimar Republic so unpopular? How did Hitler and the Nazis gain power? How did life change in Nazi Germany? How did the Holocaust happen? This unit is a depth study which looks in detail at life in Germany after the First World War from 1918-1933 (known as the Weimar Republic). Students then study Nazi Germany, 1933-45, for the second half of the unit. This unit looks at the impact of the First World War and how the Nazis were able to come to power and commit some of the most well-known atrocities in history.	Examination at end of course (40%)
Component 3 Historical Enquiry: Russia, 1815-1917	Why did Tsarism collapse in Russia? The Historical Enquiry involves a taught overview of the period before students complete an independent investigation about a key change using source materials.	Non Examined Assessment (NEA) (20%)

INFORMATION TECHNOLOGY



What does the qualification cover?

Cambridge Technicals in IT L3 (equivalent to one A-Level)

This course provides excellent preparation for higher study and employment in the field of Information Technology. The increasing importance of Information Technologies means there will be a growing demand for professionals who are qualified in this area.

Unit 1: Fundamentals of IT

A sound understanding of IT technologies and practices is essential for IT professionals. Information learnt in this unit will create a solid foundation in the fundamentals of hardware, networks, software, the ethical use of computers and how businesses use IT.

Unit 2: Global Information

This unit will provide students with a greater understanding of how organisations use information sources both internally and externally and the types of information they will encounter.

Unit 5: Virtual and Augmented Reality

Virtual Reality is a simulated environment that is intended to replicate the physical experience of being in places in the real or imagined worlds, by giving the user sensory experiences that match those which would be experienced were the user actually in that environment. Augmented Reality is the process of changing the user's view of the real world in order to give them an improved, or more detailed view of what they are seeing. This unit supports the development of skills, knowledge and understanding relevant to a job role in the areas of 3D modelling, digital transformation and even the film and games industry.

Unit 13: Social Media and Digital Marketing

The use of social media has increased massively over recent years and is now a world-wide phenomenon. This unit looks at social media and digital marketing as a concept and offers students the opportunity to explore the possible impacts, both positive and negative, that may be generated by the use of social media as a digital marketing tool.

Unit 17: Internet of Everything (IOE)

Internet of Everything (IOE) This unit is about the use of the Internet and how it is impacting people and society. You will learn about smart devices and how they are developed e.g. Alexa, smart apps, smart bulbs, smart cameras, smart CCTV, smart watches, smart lights, smart tv etc. You will design your own smart product as well.

All learners are supported by the following:

All learners are supported by the following:

- After school clubs available and online tracking so students can continually monitor their own progress
- 6 purpose built I.T. suites and 2 I.T. pods, all equipped with 30 brand new computers and new computing equipment such as, VR headsets, laptops and headsets etc.
- The latest industry standard software including MS Office 365, Adobe software suite and VR/AR/MR App development software e.g. XR+ (Virtual Reality/Augmented Reality/Mixed Reality)
- Student also have access to Microsoft Office 365, which includes all Microsoft software and their own One Drive account (online cloud storage) so they can access their files from home, complete their work online and upload assignments

If you would like an interesting, interactive and engaging choice of topics, then this course is for you. Further details can be obtained from Mr Bargery in C101.

A LEVEL MATHEMATICS

Why take Maths A level?

Maths is one of the most desirable and challenging A levels. The skills that the course requires and develops in both numeracy and problem solving are always highly desirable by employers both in industry and further educational institutes.

Maths A level is an excellent gateway qualification leading into a range of sectors such as finance, business, ICT, economics, psychology and engineering. It is a mark of academic distinction and highly respected in further education.

In a 2016 study by Nottingham University it was also found that “students that had successfully studied A level Maths received an average of an 11% increase in salary by the time they reached 34. No other A level attracted such a sustained and steady wage premium.”

Maths A level continues and develops concepts begun at GCSE and starts to really allow students to appreciate their importance and application in understanding the world around us, offering students the keys to the Universe.

Requirements for the Course

To study A level Maths it is crucial that the student has studied towards the higher paper at GCSE. It is preferable for the student to have achieved at least a grade 7.

The Course

The A level Maths course covers three main areas:

Pure Maths:

In Year 12 Pure Maths develops a lot of the topics covered in the final stages of the GCSE, but in more depth. We look at a lot of the higher algebra techniques, circles, quadratic graphs and trigonometry in more detail. This allows a more general understanding of why these topics offer so much understanding of the world around us and how they can be applied to problems in a range of contexts. We also begin to look at Calculus (differentiation and integration) and why this has become such a fundamental part of how we understand so much about our world and its inner workings since its discovery by Newton and Leibniz in the 17th century. We also introduce exponentials and logarithms and investigate their application to subjects such as population growth and radioactive decay.

Statistics:

Statistics is the study of data and probability. It is one of the most widely used part of Maths in the real world and understanding its intricacies is an interesting and important skill sought after by employers. We start by again recapping a lot of the work done towards the end of the GCSE and develop more depth to students understanding of topics such as averages, charts & diagrams, bivariate data and probability. We also start to look at statistical modelling and hypothesis testing.

Mechanics:

Mechanics is the study of motion. Why do things move the way they do, and can we predict their movement if we know certain things about them? It is the precursor to Rocket Science! “Rocket Science is just Newtonian mechanics with variable mass.” It builds on some of the ideas started in GCSE Maths such as speed distance and time, however it is the newest part of the syllabus. Students always love mechanics as it is the study of the real world. A lot of the ideas and models introduced are common sense once explained and their applications are everywhere around us.

In Year 13 a lot of the topics covered in Year 12 are built upon, developed and linked together. This allows students to broaden their understanding of Mathematics and truly start to appreciate it as a web of concepts, all interwoven and affecting each other in myriad ways and not just a list of separate skills done one after the other.

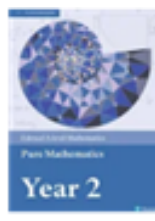
Exams:

The AQA A level has 3 exams, all 2 hours long and each worth 100 marks. Paper 1 is all pure topics, paper 2 is mechanics and pure and paper 3 is statistics and pure.

If you are genuinely interested in a degree and career in mathematics, engineering or physics, it is worth considering choosing A-level Further Maths. Information about this A-level can be obtained from the maths department.

If you have any questions, please speak to Mr Martin or Ms Calvert in the Maths Dept.

i.martin@gateacre.org d.calvert@gateacre.org



A LEVEL MEDIA STUDIES

What is Media Studies?

Media Studies A- Level is the critical examination of media products, e.g. Film, TV and print, and the way in which we interact with them. Many different media industries are studied, such as film, magazine, music videos, computer games, radio and TV texts. Students are also expected to develop and create their own products using the skills and ideas they have acquired.



Why should I take Media Studies?

The Media industries are one of the fastest growing employment sectors in the North West and students have a number of progression opportunities following their Level 3 studies. Students who have completed an A-Level course in media Studies have gone on to a variety of exciting study and employment opportunities, including journalism, film and TV work and developing digital content for online businesses.

What will the course entail?

We offer the EDUQAS revised curriculum. The new examination format is an exciting and rigorous course designed to introduce students to the critical and theoretical understanding of media products from a range of historical and cultural contexts. The course also offers students the opportunity to develop their own creative and practical production skills in the planning, production and presentation of media texts. Photography and graphic design skills are developed across this aspect of the course as students are given a brief to create a film/ games marketing campaign or a selection of magazine pages and they will use Photoshop to create professional standard products.

The A-Level course is a unitised qualification:

COMPONANT	TITLE	ASSESSMENT	% OF QUALIFICATION
1	Media, Industries and Audiences	Exam	35
2	Media Products and forms in depth	Exam	35
3	Cross- Media Production	Coursework	30

If you have any questions, please speak to Miss Lawson or email a.lawson@gateacre.org

A LEVEL MUSIC

The A-Level music course may be seen as a continuation of G.C.S.E. Music in that it is based on three key components: listening/appraising, performing and composing.

COMPONENT 1: APPRAISING (listening, analysis and understanding) 40% of total A-Level marks

An exam paper in three sections (A: Listening, B: Analysis and C: Essay) based on three Areas of Study:

The Western Classical Tradition 1650-1910

Including the Baroque solo concerto, Mozart's operas and the piano music of the Romantic period

Music for Theatre or Media

Including music by Stephen Sondheim, Claude-Michel Schonberg and Jason Robert Brown or Bernard Herrman and Hans Zimmer.

Popular Music

Including Stevie Wonder, Joni Mitchell, Muse, Beyonce, Daft Punk and Labrinth

COMPONENT 2: PERFORMANCE 35% of total A-Level marks

Solo and/or ensemble performance as an instrumentalist or vocalist.

Pieces selected by the candidate. Free lessons with a specialist tutor are available to support learning. Performances are recorded and submitted to AQA for external assessment.

A minimum of ten minutes' performance is required. This may constitute several short pieces.

COMPONENT 3: COMPOSITION 25% of total A-Level marks

Candidates submit two compositions;

- Composition to a brief set by AQA
- Free composition (in a style of the candidate's choosing)

A minimum of four and a half minutes' music in total is required. Compositions are recorded/created using music ICT and submitted to AQA for external assessment.

The department encourages active involvement in all forms of music-making, both individual and communal and students should take advantage of the many and varied opportunities available to develop their practical, aural and technical skills.

As well as studying Music at Higher Education level, Gateacre students have gone on to careers as session musicians, sound engineers, teachers, music therapists and peripatetic tutors. The department is well-connected with regard to the worlds of higher education (Liverpool Hope University, LIPA) and industry (PA company Adlib Audio who have had engineers touring with Bob Dylan and The Kaiser Chiefs amongst many others).

We welcome all enthusiastic, committed and hard-working musicians.

If you're interested in further information, please speak to any member of the Music Department staff.



A LEVEL PHOTOGRAPHY

A-Level Art: Photography (EDUQAS board)

This is a new art based course that would sit perfectly alongside other art subjects on offer at sixth form. Over this two year course, pupils are supported on a visual and creative journey, which focuses on the learner's personal progress. Students are encouraged to explore and experiment across a broad range of techniques, developing personal ideas along the way. Students opting for A'level Photography will be expected to have completed GCSE Photography.

Photography

This creative and exciting course involves pupils experiencing new and developing practical skills. These will include the fundamental skills of photography, working both in digital and analogue media. The course is a chance to visually explore and promote your own style and skill. You're given creative freedom to approach tasks in a personal way and develop your individual strengths to produce final outcomes. If you have any queries about the course please come and ask the art staff, who will be happy to help.

Course Details:

The full A-Level qualification is made up of

Unit 1 60% – Personal investigation, one very personal project of work (y12-13). Plus a written study (1000 – 3000 words).

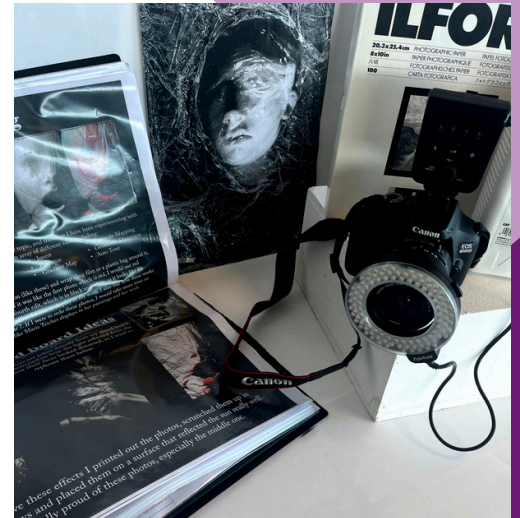
Unit 2 40% – Externally Set Assignment: 15 hr exam, plus prep work.

Possible Careers:

- Photographer
- Videographer
- Director
- Marketing
- Editor
- Fashion
- Advertising

Careers in the creative sector are one of the fastest growing in the UK. The creative industry provides around two million jobs, and employment and is growing at double the rate of the economy as a whole. Come and start your artistic path to the future. In the art department we pride ourselves on the excellent exam results achieved year upon year.

If you're interested in further information, please speak to any member of the Art Department staff.



A LEVEL PHYSICS

Learners who have achieved an A-Level Physics at Gateacre in the past have gone on to a range of university courses; including Maths, Sciences, Engineering, Medicine, Accountancy, Physics and Computing. Due to the nature of the subject being a course in the understanding of how things work, Physics also supports applications to courses without a direct scientific content.

The course studied is the AQA Physics GCE course which consists of AS, which is studied in Y12 and A2 which is studied in Year 13. Learners will have opportunities to develop themselves as scientists in ways such as:

- Recognition and recall to show understanding of scientific knowledge.
- Select, organise and communicate relevant information in a variety of forms.
- Analyse and evaluate scientific knowledge and process.
- Apply scientific knowledge and processes to unfamiliar situations including those related to modern day issues.
- Assess the validity, reliability and credibility of scientific information.
- Demonstrate and describe ethical, safe and skilful practical techniques and processes.
- Select appropriate qualitative and quantitative methods and know how to make, record and communicate reliable and valid observations and measurements with appropriate precision and accuracy.
- Analyse, interpret, explain and evaluate the methodology, results and impact of their own and others experimental and investigative activities in a variety of ways.

Entry requirements:

Learners will need to have at least a grade 6-6 in GCSE Combined Science; a strong footing in GCSE Mathematics is also recommended with a 6 grade being highly recommended.

Course Details:

Nb - page numbers refer to the specification document available on www.AQA.org.uk

2.1 Subject content

Core content

- 1 [Measurements and their errors](#) (page 10)
- 2 [Particles and radiation](#) (page 12)
- 3 [Waves](#) (page 17)
- 4 [Mechanics and materials](#) (page 21)
- 5 [Electricity](#) (page 27)
- 6 [Further mechanics and thermal physics \(A-level only\)](#) (page 30)
- 7 [Fields and their consequences \(A-level only\)](#) (page 34)
- 8 [Nuclear physics \(A-level only\)](#) (page 41)

Options

- 9 [Astrophysics \(A-level only\)](#) (page 45)
- 10 [Medical physics \(A-level only\)](#) (page 49)
- 11 [Engineering physics \(A-level only\)](#) (page 54)
- 12 [Turning points in physics \(A-level only\)](#) (page 58)
- 13 [Electronics \(A-level only\)](#) (page 62)

**Further details are available from:
Mr Byrne on p.byrne@gateacre.org**

A LEVEL PSYCHOLOGY

What is Psychology?

It has been defined as 'The Science of Mind and Behaviour'. It's a fascinating subject that brings together aspects of science and social sciences and it considers questions as diverse as: How do we perceive colours? How do children acquire language? What causes schizophrenia? Is eyewitness testimony unreliable? Why do we dream? Why do people commit crime? Psychology works toward trying to explain why we do things and how our genes, nervous system and environment enable us to do them.

Why study Psychology?

Aside from the insight it gives into human behaviour, Psychology is a subject that can be applied in many different careers and areas of study. The understanding of human and societal interaction is valuable in Business, Computing, Media, Law, Teaching, Nursing, and Medicine. Many universities offer Psychology courses with a wide range of specialisms such as Sports, Educational, Health, Occupational, Forensic or Clinical Psychology. It's an excellent A'level subject if you are curious about people, methodical and creative in your approach to learning and have good critical thinking skills.



Course requirements:

This is a subject we start from scratch so you do not need to have studied it before, however an interest in understanding human behaviour would be a definite advantage. During the course you will need to be able to communicate effectively, and cope with data analysis and scientific thinking. To do the course you therefore must have a GCSE level 5 in Maths, English and Science.

If you have any questions, please speak to Mrs Sims or email j.sims@gateacre.org

A-Level Unit: Introduction to psychology.

You will study: Topic 1: Social influence- how society effects human behaviour

Topic 2: Memory - how the brain stores and retrieves information

Topic 3: Attachment - the importance of early relationships

Topic 4: Psychopathology - abnormal behaviour and its treatment.

Assessment: There will be a two hour exam covering questions on all four topics.

A-Level Unit: Psychology in context.

You will study: Topic 5: Approaches in psychology - investigating the origins and perspectives of psychological research.

Topic 6: Biopsychology - considering the biological bases of human behaviour.

Topic 7: Research methods - understanding how to apply scientific techniques

Assessment: There will be a two hour exam

A-Level Unit: Issues & options.

You will study: Topic 8: Issues and debates - areas of controversy within psychology.

Optional topics: Relationships, Schizophrenia & Forensic Psychology/Aggression

Assessment: There will be a two hour exam

A LEVEL SOCIOLOGY

What is Sociology?

Sociology is a fascinating and stimulating subject with something to appeal to everyone. It involves exploring and asking questions about the society in which we live. Studying Sociology offers students opportunities to gain a greater understanding of society and to make sense of their own experiences within it. Sociology can be both thought provoking and challenging because it forces people to rethink some of their common-sense views and assumptions.

TOPICS	EXAMPLE OF CONTENT
Component One Education with Theory and methods in context	Why do middle class children do better than working class children at school? What do we learn at school...is it more than simply the subjects on our timetables? Why are the girls doing so much better than the boys? Are teachers like police officers? How do Sociologists discover the answers to their questions? What did James Patrick discover when he spent some time as and under-cover member of a gang in Glasgow? How useful are official statistics?
Component Two Families and households with beliefs in society	Why has divorce become so common In Britain? Are men doing more housework than in the past? Have relationships within the family changed over time? Learn about the Nayar people and why the women could have up to twelve husbands! Is religion still important in modern Britain? Are people still guided by religious beliefs? Why do people join cult groups such as the Moonies? Is religion a force for good or evil? Is religious belief a source of social change or conservatism?
Component Three Crime and deviance with Theory and methods	What are the causes of crime? Who commits crime? Why are some many young men involved in knife crime? Why are single people more likely to commit suicide than married people? How is social order maintained? How does society operate? Who was Karl Marx and how did he explain the nature of society? Do individuals decide how to behave, or is it already decided for us by society? How can sociological research have an effect on policy decisions?

Why choose Sociology?

Sociology is ideal for someone attracted to the idea of starting a subject from scratch - it is not necessary to have studied it to GCSE level. As Sociology gives an insight into many areas of life, it combines well with any other subject. It is particularly useful for someone to choose who does not wish to completely abandon either the arts or the sciences, as Sociology include elements of both.

Career opportunities

The knowledge and skills gained by the study of 'A'-Level Sociology make it a useful qualification for almost any career which involves working with people, for example, teaching, social work, nursing, the police, travel and leisure.



If you have any questions, please speak to Mr Wildman or email m.wildman@gateacre.org

SOUND ENGINEERING BTEC

This vocational A-LEVEL EQUIVALENT course is centred on the practical issues of the music industry. The qualification will have at its core Music Technology taught through a practical approach. All students study five Units (one of which is externally assessed) plus a series of four additional units.

EXTERNALLY ASSESSED UNIT:

- Unit 6: Digital Audio Workstation Production

FOUR ADDITIONAL UNITS:

- Unit 1: Live Sound
- Unit 2: Studio Recording Techniques
- Unit 13: Mixing and Mastering Techniques
- Unit 18: Working and Developing as a Production Team



As with all BTEC qualifications, the course is vocational – linked to the real world of work. In this respect, the Music Department boasts excellent and long-standing industry links, not least of all with many of our former students who have successfully pursued careers in music as award-winning sound engineers, studio owners, session musicians, song-writers and commercial composers.

The Music Department is well-equipped with its own studio complete with industry-standard hardware, outboard effects and compressors and a full range of microphone types. In addition, students have access to a range of software including the Nuendo, Sibelius and Cubase programs.

Our BTEC students are encouraged to develop their practical skills still further outside curricular time, taking advantage of opportunities to record and mix GCSE and A-Level Music performances and compositions or to set up and assist with the live sound for our many and varied range of musical events such as Christmas and Summer concerts, musicals, Bands Night gigs or A-Level performance evenings.

If you have any questions, please speak to Mr News or email m.news@gateacre.org

A LEVEL SPANISH

Why choose Spanish?

Apart from being beneficial at a personal level, your A Level in Languages can help with quite a few career paths. For those who want to specialise in language, there's translation or teaching. Or maybe you want to work in the travel and tourism industry. But even as, say, an engineer or designer, being proficient in a language will give you broader career options.



What does it entail?

Throughout the course you will study a variety of themes. You will develop your understanding of themes relating to the society and culture of countries where Spanish is spoken and is a focus on how Spanish society has been shaped, socially and culturally, and how it continues to change.

Theme 1: Social Issues and trends	Theme 2: Political and artistic culture
<ul style="list-style-type: none">· Modern and traditional values· Cyber space· Equal rights· Immigration<ul style="list-style-type: none">· Racism· Integration	<ul style="list-style-type: none">· Modern day idols· Spanish regional identity· Cultural heritage· Today's youth, tomorrow's citizens<ul style="list-style-type: none">· Monarchies· Popular movements

Over the two years, we also study a book and a film which will be used as a focus for the writing exam.

You will also conduct a research project on a subject or key question which interests you and which is relevant to a Spanish speaking country. The aim of this is to develop your research skills and analyse and summarise your findings to present and discuss them in the speaking assessment.

How is it assessed?

The course is assessed at the end of Y13 with 3 different papers:

Paper 1: Listening, reading and writing

This involves an exam of 2hr30 on the themes and grammar we will have studied, as well as a translation of around 70 words and is worth 50% of your grade.

Paper 2: Writing

This involves writing two essays in Spanish about our chosen film and book. The essay will be around 300 words and the exam will last 2 hours. This is worth 20%.

Paper 3: Speaking

This will involve a discussion across a theme we have studied across the two years as well as a presentation and discussion on your individual research project.

Students will be need to have a minimum of a Grade 6 at GCSE.

Any questions? See Mrs Foy or ask your Spanish teacher.

SPORT BTEC

Who is this qualification for?

The Pearson BTEC Level 3 National Extended Certificate in Sport is intended to be an Applied General qualification for post16 students who aim to progress to higher education and ultimately to employment, possibly in the sport sector. The qualification is equivalent in size to 1 A Level and aims to provide a coherent introduction to study of the sport sector at this level.

What does the qualification cover?

The content of this qualification has been developed in consultation with academics to ensure that it supports progression to higher education.

The following mandatory units must be taken:

- Anatomy and Physiology. Assignments – Written exam set and marked by the exam board.
- Fitness Training and Programming for Health, Sport and Wellbeing. Tasks - set and marked by the exam board.
- Professional Development in the Sport Industry - Internally assessed by the department and sent to external moderator.

In addition, students choose optional units from a range that has been designed to support choices in progression to sport courses in HE. They cover content areas such as:

- Application of fitness testing
- Sport psychology
- Practical sports performance
- Sports leadership.

What could this qualification lead to?

Study of sport particularly encourages the development of skills and behaviours such as teamwork, leadership, performance analysis, resilience, evaluation, analysis and synthesising concepts. These skills are developed through the variety of approaches to teaching and learning enabled by the specification.

The qualification will support entry to HE courses in a very wide range of disciplines, for students wishing to study an aspect of sport in HE, opportunities could include:

- BA (Hons) in Sport Studies and Business, if taken alongside Business and Mathematics
- BSC (Hons) in Sport Psychology, if taken alongside Pearson BTEC Level 3 National Extended Certificate in Applied Science and A Level in Psychology
- BA (Hons) in Sports Education and Special and Inclusive Education, if taken alongside an A Level in English Language and Drama & Theatre Studies.
- BA (Hons) in Sport and Exercise Science, if taken alongside a Pearson BTEC Level 3 National Diploma in Applied Science.

If you have any questions, please speak to Mr Hill or email c.hill@gateacre.org

