

Gateacre School Uniform



Uniform for all students Years 7-11

Black Blazer with Gateacre School badge

Black trousers or black knee-length skirt or pinafore

White shirt (long or short sleeved)

School Tie, Black & Purple

Plain black flat shoes without visible branding or bows

Plain black or white socks or black tights

Black v-neck Jumper (optional) with Gateacre badge

No cardigans

GIRLS



BOYS



SPORTSWEAR/ PE KIT



BOYS



GIRLS



TECHNOLOGY



Cookery
Apron
(any colour)



Woodwork/Craft
Apron
(any colour)

Gateacre School Uniform Expectations

	
ALLOWED	NOT ALLOWED
TROUSERS	
<p>Boys/Girls. Black school trousers, must be full length and not made from any fabric other than standard trouser fabric.</p> 	<p><i>No jeans, denim, leggings, jeggings or stretchy material. No flares, no skinny style or tight trousers. Tights are never acceptable trousers.</i></p> 
SKIRTS	
<p>Smart, plain black school skirt or pinafore. Knee Length. If tights are worn they must be at least 40 denier.</p> 	<p>Skirts must be plain black, not tight or clingy and NOT shorter than the knee. No Lycra or stretchy material. Unacceptable Examples:</p> 
SHIRTS	
<p>White shirt with top button and collar. Top button must be fastened and shirt must be tucked in, all the way round.</p>	<p>No t-shirts, football shirts under the school shirt.</p>



ALLOWED



NOT ALLOWED

TIE

Tie must be worn with school crest showing and top button of shirt done up.

Ties must be fastened correctly showing the school crest.

MAKE UP

No make-up is to be worn or allowed in school.



Heavy or obvious make-up, coloured lipstick or eyeshadow is not permitted and will have to be removed once seen. No nail varnish, false nails, false eye lashes or lipstick **for any year group.**

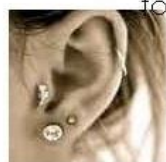


JEWELLERY

Other than a watch, no jewellery may be worn, apart from one small pair of plain studs.

No nose studs, rings or facial piercings.

All excess jewellery must be removed. Pupils who repeatedly breach the rules will have it confiscated and parents will have to pick it up.



HAIRSTYLES

Hairbands and headscarves/clips must be plain black.

No patterns to be cut into hair. No unnatural vivid colours. No bows. No hairbrushes seen in school.



Examples of banned hairstyles





ALLOWED

NOT ALLOWED

SHOES- BOYS

Shoes must be plain all black, leather, professional business-like, polish-able shoes, either slip-on or lace-up. Boys' shoes must be **plain, black shoes. No logos. No colours.**

No trainers, canvas shoes or sports shoes or pumps. No high heels or boots. No stripes, logos, emblems, colours or coloured soles. No metal or plastic logos, no tags, no metal or plastic bars in or through laces.

Examples of acceptable shoes shown below: (particularly popular styles circled green)

Examples below of unacceptable or banned footwear:





ALLOWED



NOT ALLOWED


SHOES- GIRLS

Shoes must be plain all black, leather, professional business-like, polish-able shoes, either slip-on or lace-up.

Girls' shoes must be **plain black, flat shoes**.

Examples of acceptable shoes shown below:
(particularly favourable styles circled green)



No trainers, canvas shoes or sports shoes or pumps. No high heels or boots. No stripes, logos, emblems, colours or coloured soles. No metal or plastic logos, metal or plastic bars in or through laces. No tags, flowers or bows. 

Examples of unacceptable, banned footwear:





ALLOWED

NOT ALLOWED

BAGS

Uniform includes a suitable school bag big enough to carry A4 school books/folder, School Planner, and at least one pen, pencil, ruler and rubber.

Examples of unsuitable bags.



COATS AND CAPS

Coats should be sensible, waterproof. All coats should be removed as soon as students enter the building.

Hoodies and hats are NOT permitted and must not be worn under any circumstances. They will be confiscated.



MOBILE PHONES/DEVICES

Mobile phones should be switched off and out of sight.

Mobile phones **MUST NOT** be seen or heard. Phones must be switched off and out of sight during school time. Devices & headphones are not permitted and must **NOT** be seen.



kittedoutschoolwear.co.uk



Gateacre School



SHOP INSTORE & ONLINE



**0151 733
5533**



114 Allerton Road, Mossley Hill L18 2DG

We are open Monday to Saturday 9.00am to 5.00pm

(Extended opening hours during Summer Holidays, check our website for details)

